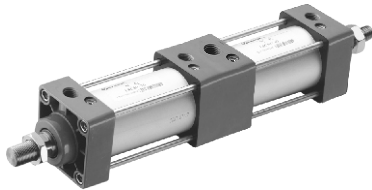


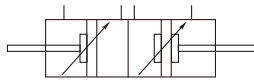
Standard Cylinder(Numerous stroke Type)



Product Code System

ESCP	—	50	×	50	—	25	—	S	—	LB
型号/Model 多行程型 Numerous stroke Type		缸径 Inner Diameter		行程1 Stroke1		行程2 Stroke2		感应磁环 Inductive Magnetic Ring S:带磁环 Blank: Without magnetic ring		固定型式 Mounting Type 空白: 基本型 Blank: Basic LB:前后固定式 LB:Front and Rear Fixation FA:前法兰式 FA:Front Flange

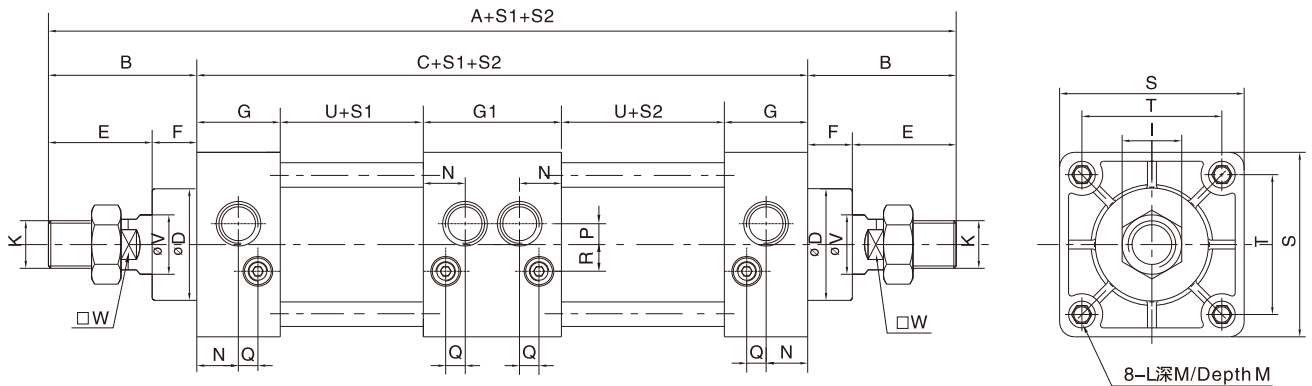
Symbol



Example

▲For order of the ISO adjustable stroke (tie-rod) LB fixed pattern mickey mouse standard cylinder which the inner diameter is 40mm , the stroke is 100mm ,adjustable stroke25mm, the magnetic ring is attached to , the correct order code is :
ESCP - 40 x 100 - 60 -S- LB

Dimensions



缸径 Inner Dia.	符号 Code	A	B	C	D	E	F	G	G1	H	I	J
32		280	47	186	28	32	15	28	56	22	17	6
40		284	49	186	32	34	15	28	56	24	19	7
50		300	57	186	38	42	15	28	56	32	22	8
63		306	57	192	38	42	15	28	56	32	22	8
80		364	75	214	47	54	21	33	66	40	30	10
100		376	75	226	47	54	21	33	66	40	30	10

缸径 Inner Dia.	符号 Code	K	L	M	N	O	P	Q	R	S	T	U	V	W
32		M10X1.25	M6X1	11	15	G1/8	5	6.5	6.5	46	33	37	12	10
40		M12X1.25	M6X1	11	15	G1/4	6	6	8.5	51	37	37	16	14
50		M16X1.5	M6X1	11	15	G1/4	7	5	9	62	47	37	20	17
63		M16X1.5	M8X1.25	9	14	G3/8	7	5	10	75	56	40	20	17
80		M20X1.5	M10X1.5	15	17	G3/8	7	5.5	11	94	70	41	25	22
100		M20X1.5	M10X1.5	15	17	G1/2	7	9	11	112	84	47	25	22

※Please contact us if you want special stroke cylinder