

## 4A 1 Series 5/2 Way & 5/3 Way Air Control Valve



4A 110系列  
4A 110 series

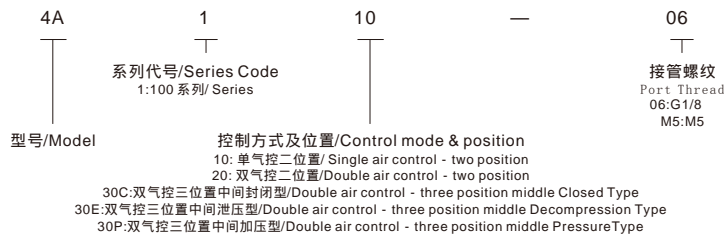


4A 120系列  
4A 120 series



4A 130系列  
4A 130 series

### Product Code System



### Example

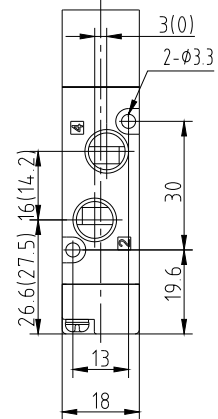
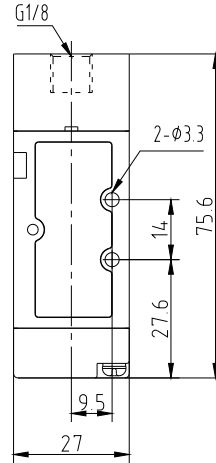
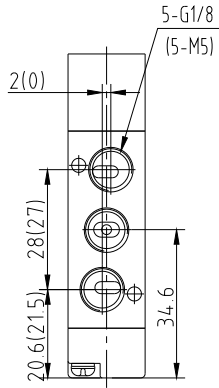
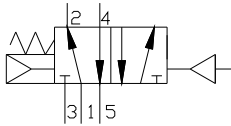
▲ For the order of double air control - three position closed type 4A1 series air control valve which port thread is M5, the correct order code is: 4A130C-M5

### Specification

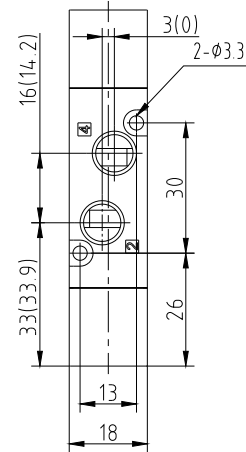
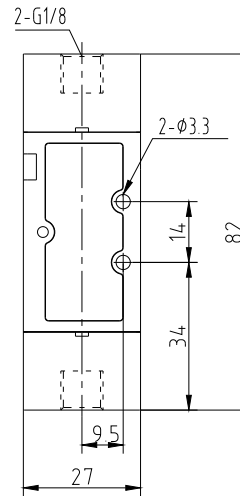
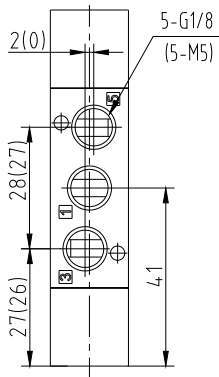
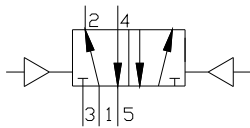
型号Model	4A110-M5	4A120-M5	4A130C-M5	4A130E-M5	4A130P-M5	4A110-06	4A120-06	4A130C-06	4A130E-06	4A130P-06
工作介质/ Fluids	经过滤的压缩空气 / The constrigent after filtered									
动作方式 / Operation	外气控/ Exterior Control									
位置数 / Position	二位五通 5/2 Way		三位五通 5/3 Way			二位五通 5/2 Way		三位五通 5/3 Way		
有效截面积 / Efficient Sectional Area	5.5mm <sup>2</sup> (CV=0.31)		5mm <sup>2</sup> (CV=0.28)			12mm <sup>2</sup> (CV=0.67)		9mm <sup>2</sup> (CV=0.50)		
接管螺纹/ Port Thread	进气/ Supply=出气/ Export=排气/ Exhaust=M5					进气/ Supply=出气/ Export=排气/ Exhaust=G1/8				
润滑/ Lubrication	不需要/Not Required									
使用压力 / Operating Pressure	0.15~0.8MPa									
最大耐压力/ Max Pressure	1.2MPa									
工作温度 / Operating Temperature	-5~60									
最高动作频率/ Max Frequency	每秒五次/ 5 Times Per Second									
寿命/Life	2500万次/25 Million									

## Dimensions

### 4A110-06(M5)



### 4A120-06(M5)



### 4A130-06(M5)

