

EAL系列油雾器



EAL1000/EAL2000

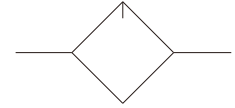
EEL3000

EAL3000

EAL4000

EAL5000

符号



技术参数

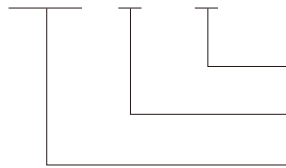
型号Model	EAL1000/EAL2000	EEL3000	EAL3000	EAL4000	EAL5000
最高使用压力/ Operating Pressure MPa	1.0				
允许耐压力/ Max Pressure MPa	1.5				
使用温度 / Operating Temperature	0-60				
最少滴液流量 / Min Flow For Oil Drop m ³ /min(ANR)	0.015	0.03	0.03	0.065	0.19
储油量 / Max Oil Level ml	20	70	85	170	140
使用油 / Oil Recommended	1级涡轮机油/ Turbine Oil NO.1(ISO VG 32) (不可使用锭子油/ NO Spindle oil is allowed)				
配管螺纹 / Port Thread G	1/8、1/4	1/4、3/8	1/4、3/8、1/2	3/8、1/2(2吨配合变径接头使用 3/4 For reduced joint)	G3/4,G1

注意事项/ Caution

注：1、确认系统内没有承受压力之后，再拆卸杯子、杯子护罩；
2、最少滴液流量是指在设定压力为0.5MPa(5.1kgf/cm²)的基础上，每分钟5滴涡轮油的滴液流量
Note: 1.Assemble and disassemble the plastic bowl and bowl guard when it is confirmed that there's no load on the object.
2.The minimum drop flow refers to the drop flow of 5 turbine oil every minute on the basis of the pressure set at 0.5MPa

型号命名

(a) - (b) - (c)
EAL3000 - 03 - B



安装型式：C型支架
Mounting Type:C-Bracket
接管螺纹：G3/8
Port Thread:G3/8
型号/Model

油雾器

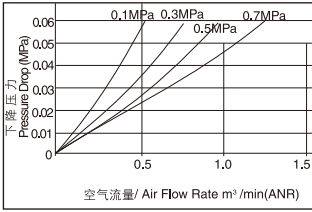
(a) 型号 Model	(b) 接管螺纹 Port Thread	最高使用压力 Operating Pressure (MPa)	最大流量/ Max Air Flow * M ³ /min(ANR)	储油量 Max Oil Level (cm ³)
EAL1000-01	G1/8	1.0	0.5	20
EAL2000-02	G1/4		0.6	
EEL3000-02	G1/4		1.1	70
EEL3000-03	G3/8		1.6	
EAL3000-02	G1/4		1.2	85
EAL3000-03	G3/8		1.8	
EAL3000-04	G1/2		2.0	
EAL4000-03	G3/8		2.3	
EAL4000-04	G1/2		2.6	170
EAL4000-06	G3/4		2.9	
EAL5000-06	G3/4	7.0	140	
EAL5000-10	G1	7.0		

使用温度范围:0~60
* 进气口压力0.7MPa、设定压力0.5MPa、压力降0.1MPa

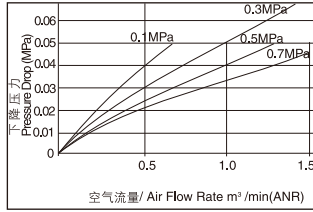
(a) 型号 Model	(b) 接管螺纹 Port Thread		(c) 安装型式 Mounting Type			
EAL1000	01	G1/8	空白 Blank	不带支架 Without Bracket		
EAL2000	02	G1/4				
EEL3000	02	G1/4				
	03	G3/8				
EAL3000	02	G1/4				
	03	G3/8				
	04	G1/2				
EAL4000	03	G3/8			B	C型支架 C-Bracket
	04	G1/2				
	06	G3/4				
EAL5000	06	G3/4				
	10	G1				

流量特性

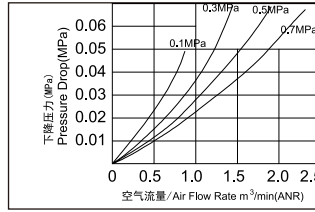
EAL1000-01



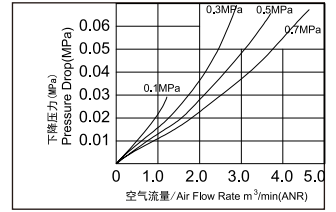
EAL2000-02



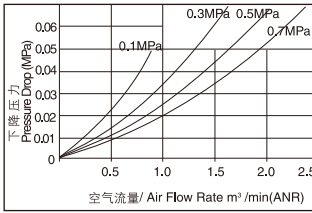
EEL3000-02



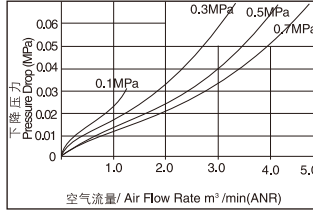
EEL3000-03



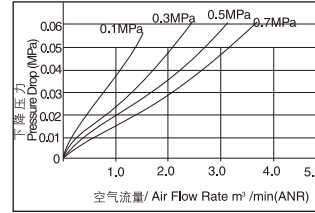
EAL3000-02



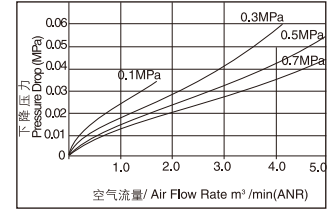
EAL3000-03



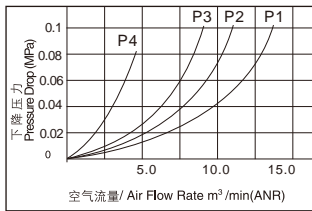
EAL4000-03



EAL4000-04



EAL5000-06/10

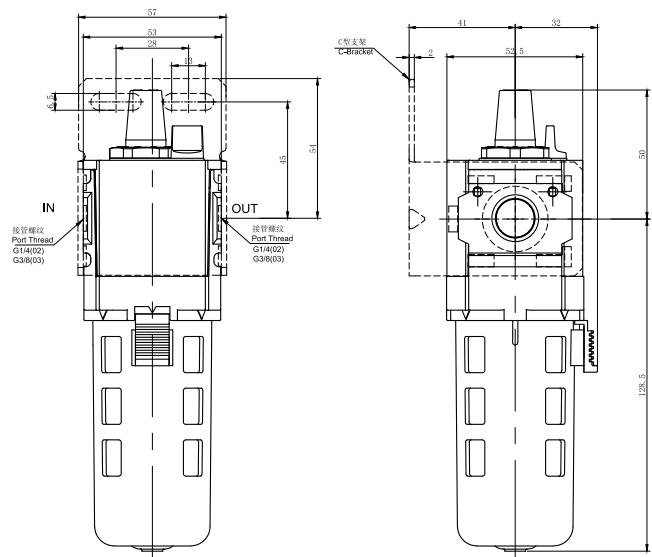
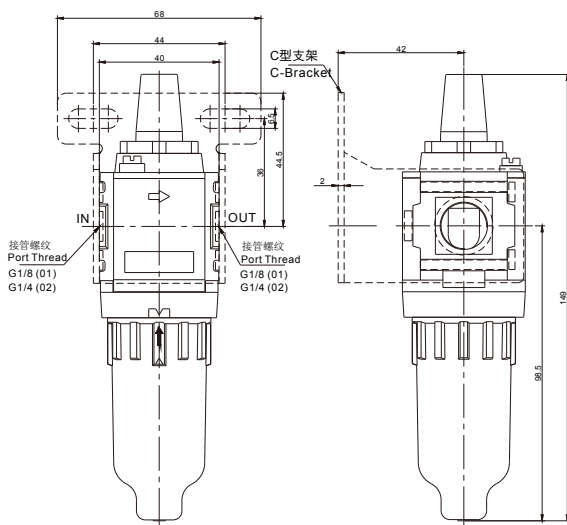


外形与安装尺寸

EAL1000

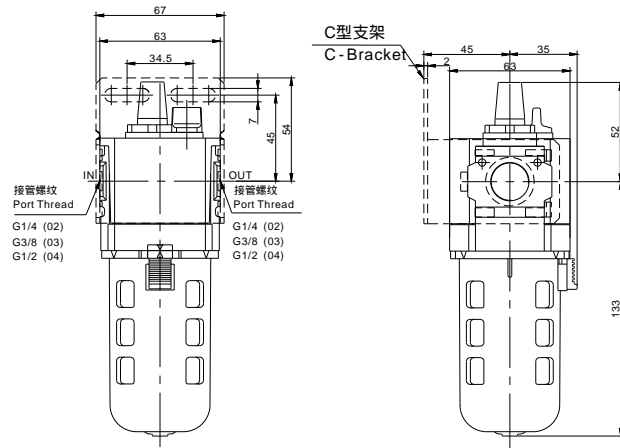
EAL2000

EEL3000

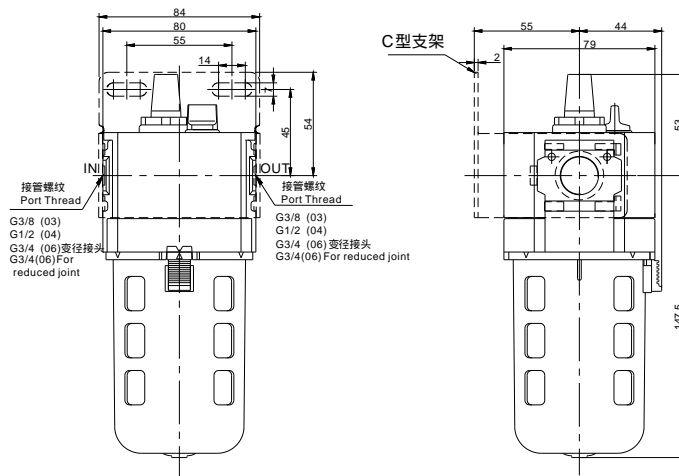


外形与安装尺寸

EAL3000



EAL4000



EAL5000

